

versar.com.sg

VCM MODEL

VCM MODEL

End Suction Close
Coupled Centrifugal
Pumps



VERSAR®

General Information

Discharge Flange	: DN 32 - DN 250
Capacity	550 m3/h
Head	105 m
Speed	1500 - 3600 rpm :
Liquid Temperature	-20°Cto + 140°C*
Pressure (Pmax)	16 bar
Frequency	: 50 - 60 Hz

(*) : Optional

According to different voltage and operating voltage, the frequency and voltage may vary. Can be shaped according to customer request.

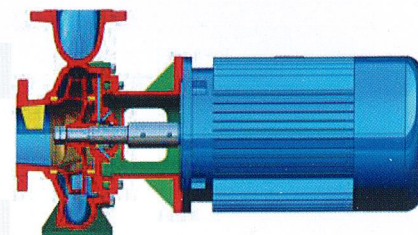
Depending on the type of liquid, operating temperature and pressure. The pump material changes. Please contact our company for detailed information.

Handled Liquids

Clean or slightly dirty, non-abrasive, low-viscosity fluids

Applications

Petro-chemical	Power Plants	Fire fighting Industrial
Building Systems	Food and Beverage Industries	water supply
Iron and Steel Industries	Mining	



Design Features

- VCM series pumps has designed for pumping non-abrasive and small particulars liquids.
- VCM series pump has just one impeller,pump and motor is connecting by coupling.It gives yours avantages for easy disassembling.
- Pump DIMENSIONS are acceptable EN 733/DIN24255 standard.
- Input and Output Flange Diamesions are acceptable ISO 1092-2/PN 16.
- VCM series is off the wheel and wheel balancing holes in the wings to minimize ta axial loads, dynamic loads are balanced within.
- Sealing is provided by gland packing.Sealing is provided by also mechanical seal as customer request.
- Easy dissasamble to pump and change impeller,bearings and seals.
- All impellers are balanced statically and dynamically according to ISO 1940 class 6.3.
- Direction of rotation is clockwise viewed from driver end.

Pump Code

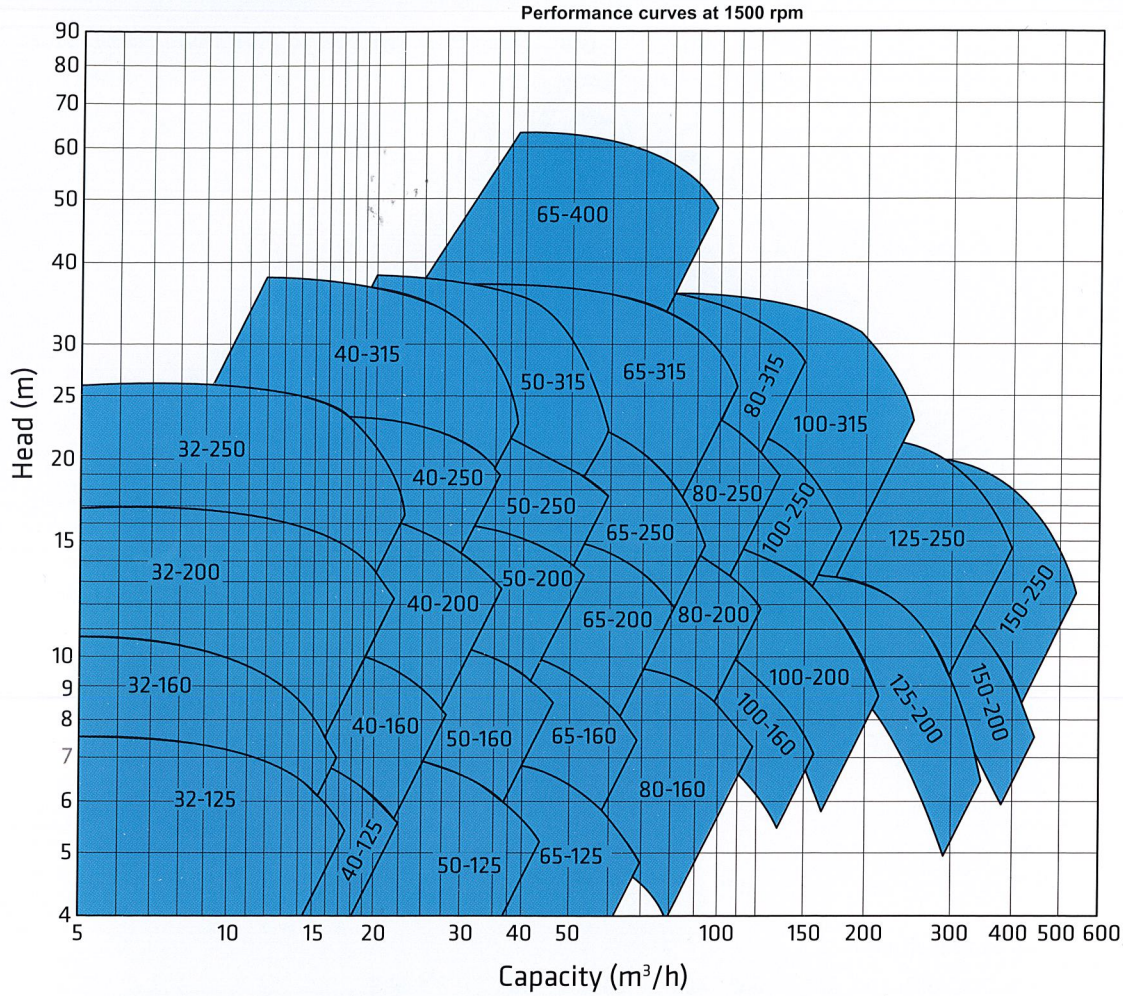
Pump code

VCM 60-315. VE 65-315BG. VCM 65-315SG.

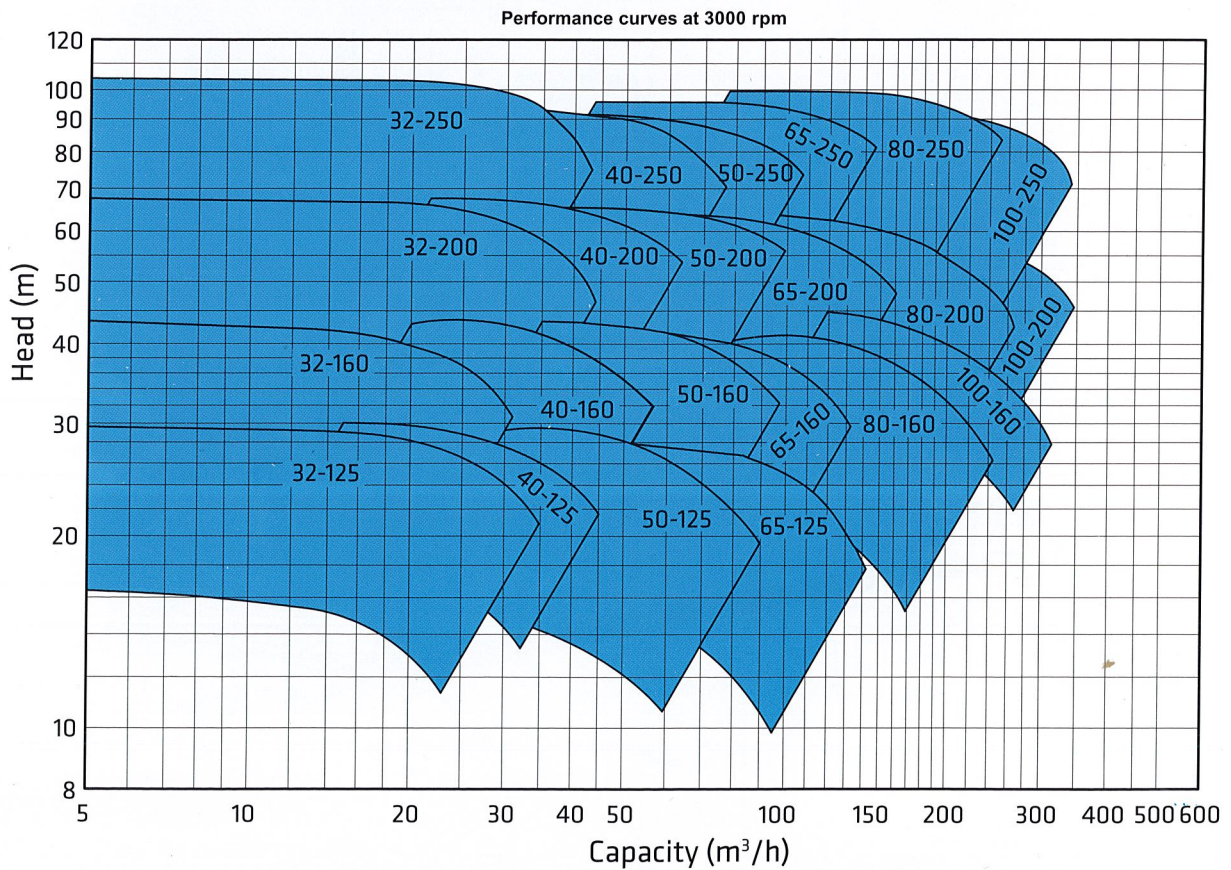
Series VCM (with Cast Iron impeller)	VCM	65	-	315	BG	SG
Nominal diameter (mm) of discharge port						
Impeller diameter (mm)						
Series VCM (with Bronze impeller High pressure)						
Series VCM (with AISI 316 stainless steel impeller high pressure)						

Selection Charts

VCM MODEL



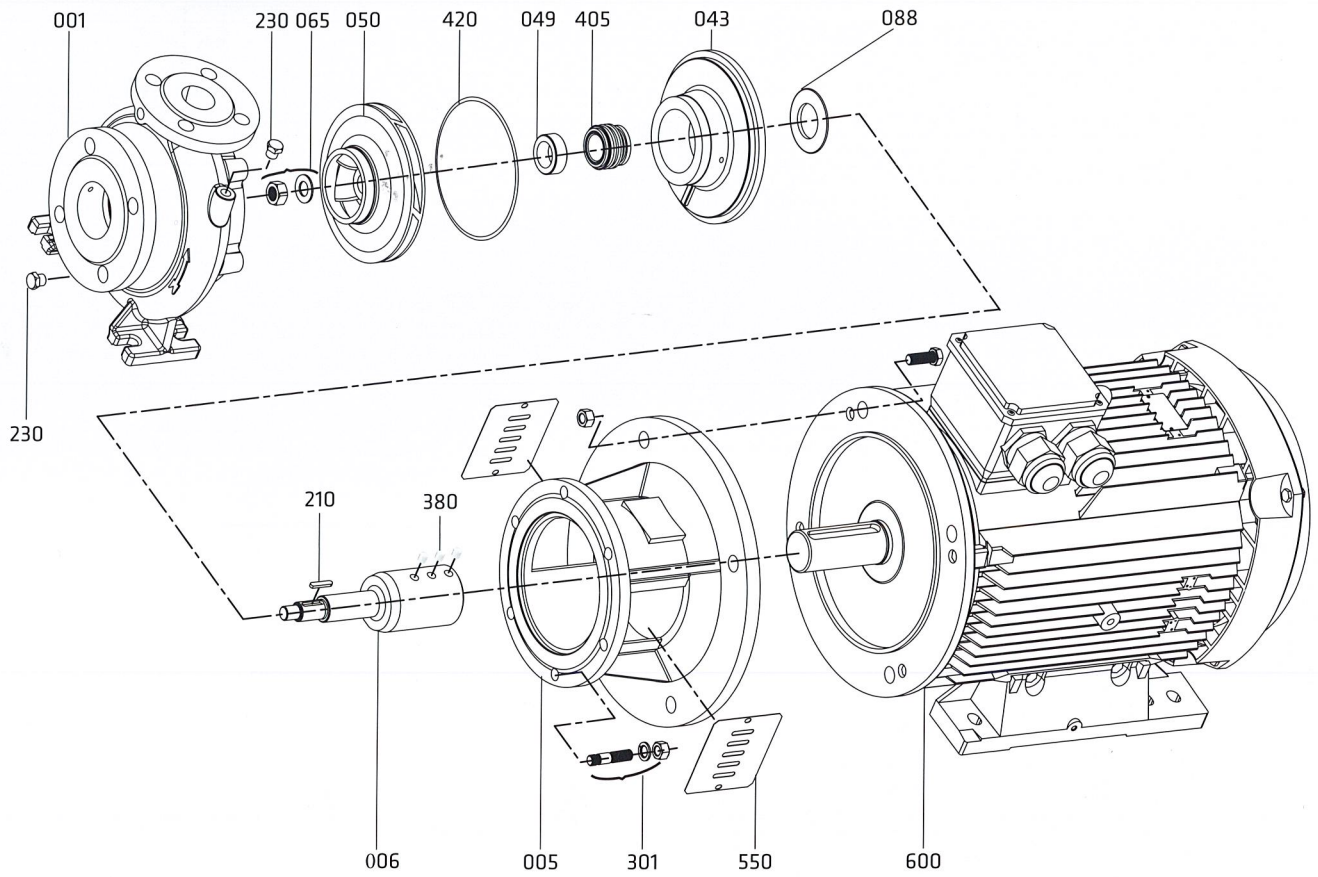
1500 rpm 1500rpm (50 Hz)



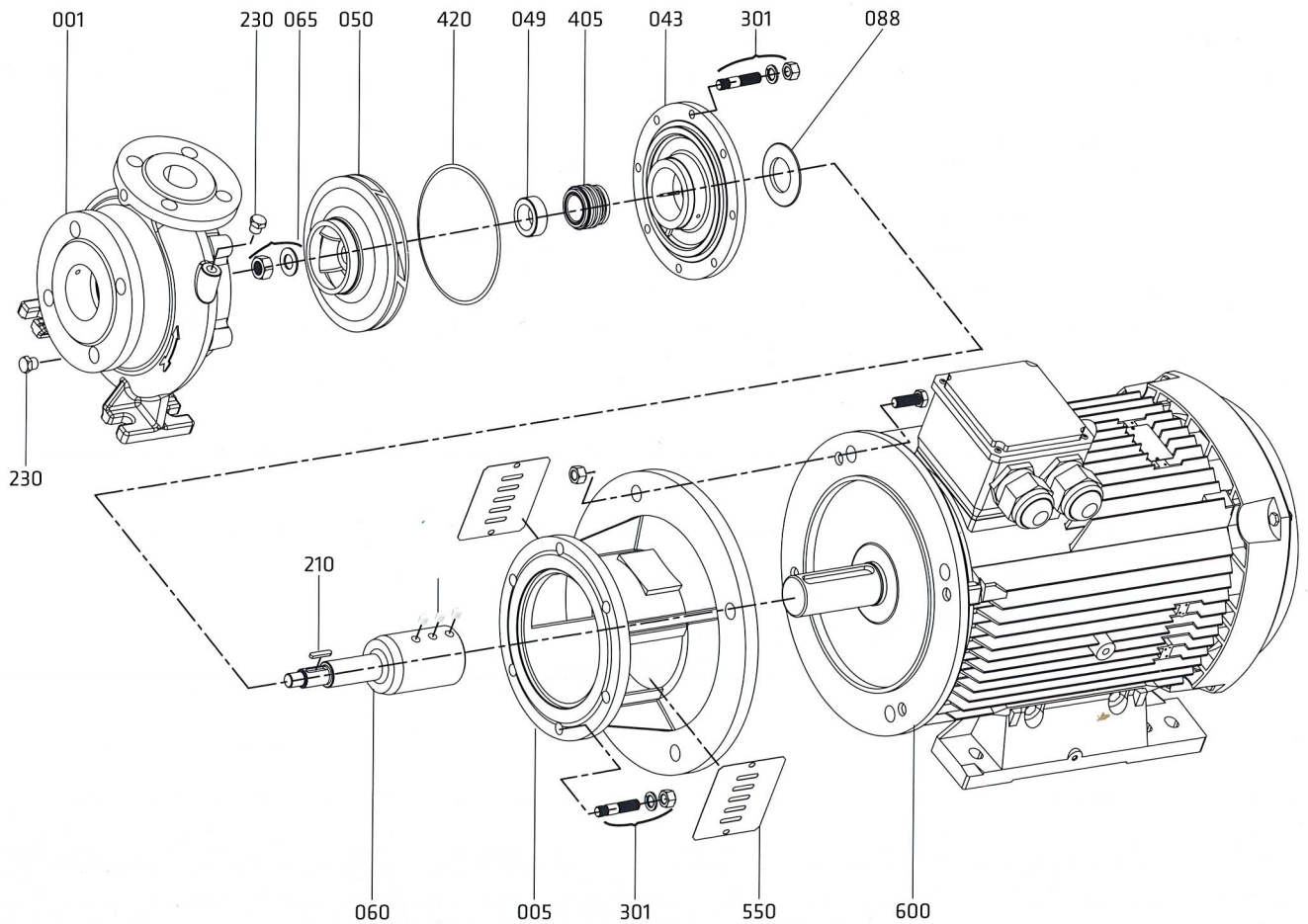
3000 rpm 3000rpm (50 Hz)

Pump Component

VCM MODEL



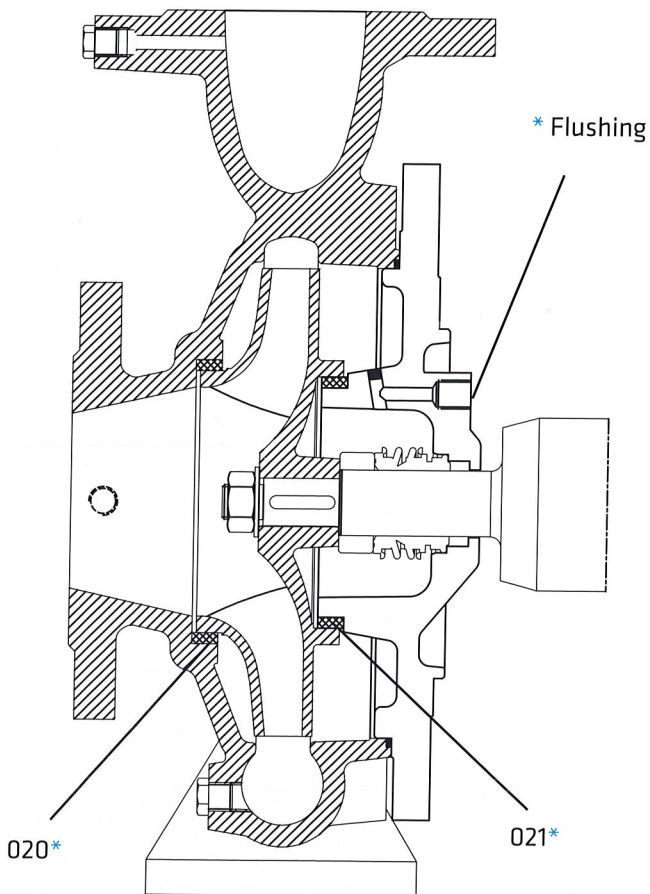
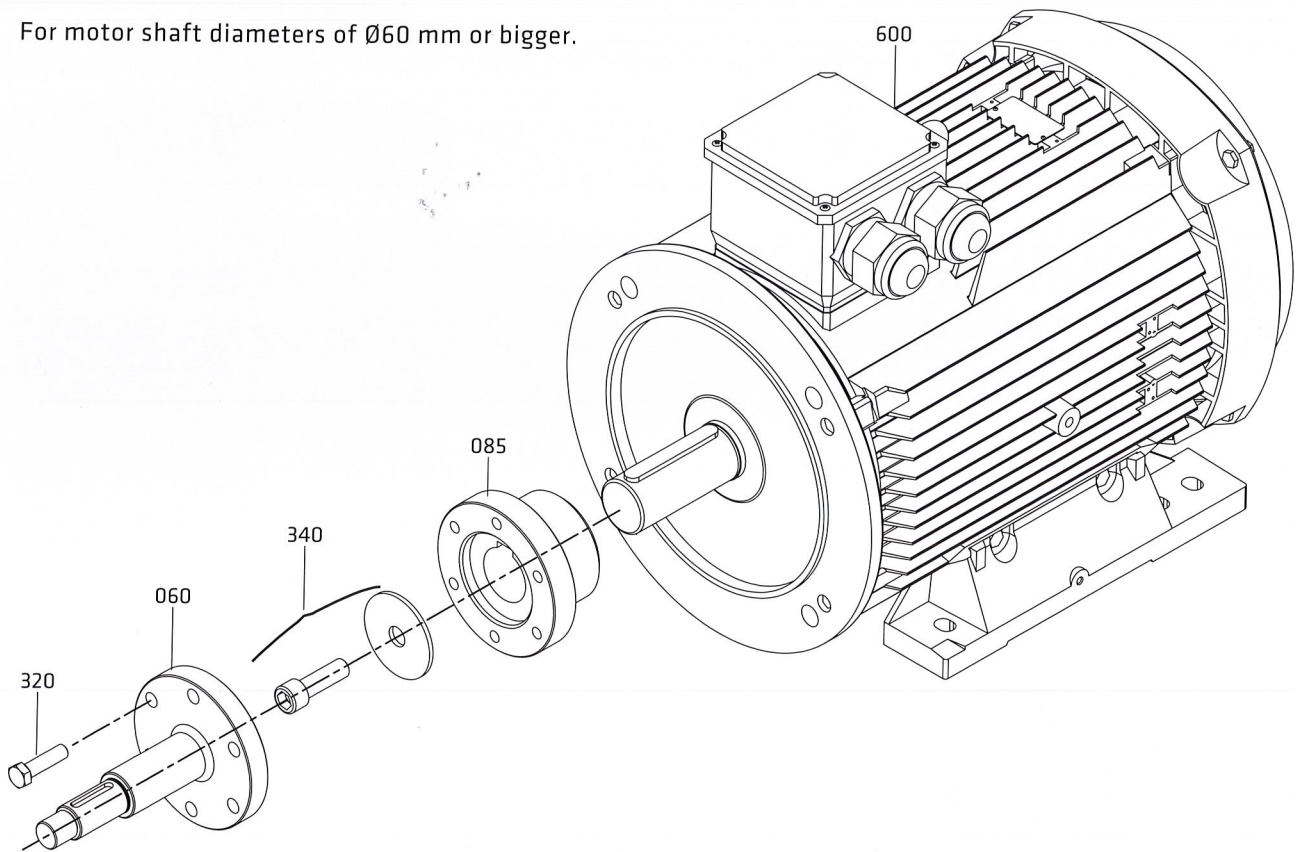
Form: F2 (Slide - fit shaft application)



Pump Component

VCM MODEL

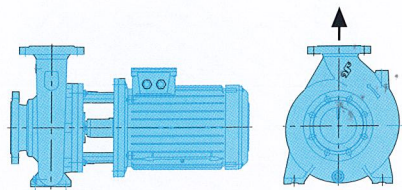
For motor shaft diameters of Ø60 mm or bigger.



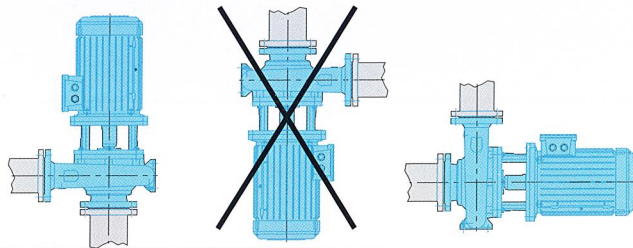
Part List

001	Volute Casing
005	Motor Pedestal
020*	Wear Ring (casing)
021*	Wear Ring (seal cover)
043	Mechanical Seal Cover
049	Mechanical Seal Spacer Sleeve
050	Impeller
060	Shaft
065	Impeller Nut and Washer
085	Rigid Coupling
088	Thrower
210	Impeller Key
230	Screw
301	Stud, Washer and Nut
320	Screw
340	Allien Screw and Washer
380	Set Screw
405	Mechanical Seal
420	O-ring
550	Guard
600	Electric Motor

VCM pumps can be installed in different arrangements

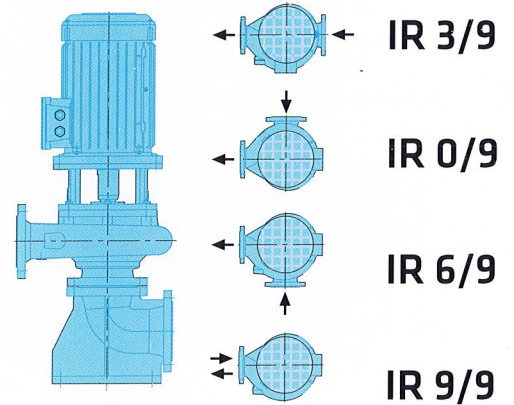


Horizontal installation on ground
Horizontal position on a base plate



Installation on perpendicular pipes

- Between two perpendicular pipes in horizontal or vertical position. The axis of motor below the horizontal line is not admissible.



IR 3/9



Direction of rotation viewed from driver end: R : Right

Vertical installation on ground

- Vertical position by means of a special suction elbow with foot.
- Standard manufacturing is as in the drawings above. Suction elbow position can be adjusted for different positions.

PUMP PART MATERIAL

VCM MODEL

PART LIST	10	30	20	60	6L	70	7L	80	7D	7S	8N	4C	4A	80	60	6L	70	7L	7D	
	0.6025	0.7040	1.0619	1.4308	1.4309	1.4408	1.4409	1.4008	1.4517	1.4469	1.4317	2.1050.01	2.0975.01	1.4021	1.4301	1.4306	1.4401	1.4404	1.4462	
Volute Casing	●	○	○	○	○	○	○	○	○	○	○	○	○							
Casing Cover	●	○	○	○	○	○	○	○	○	○	○	○	○							
Impeller	●	○	○	○	○	○	○	○	○	○	○	○	○							
Shaft														●	○	○	○	○	○	
Bearing Housing	●	○																		
Wear Ring	○	○	○	○	○	○	○	○	○	○	○	○	○							
Spacer Sleeve														●	○	○	○	○	○	

(*) Optional :Depending on customer requirement or request different types and brands of mechanical seals are applicable.

● Standard manufacturing
○ Optional

NOTE: Depends on the request, different than above casting and shaft material can be supplied.

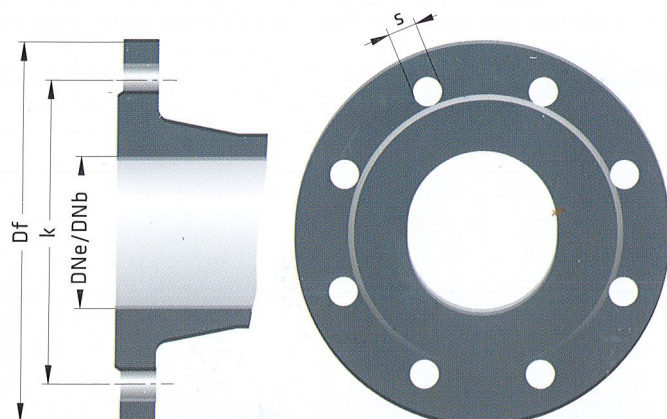
Description	DIN 17007	EN-DIN	ASTM
Cast Iron	0.6025	GJL-250 (GG25)	A 48 Class 40-B
Nodular Cast Iron	0.7040	GJS-400-15 (GGG 40)	A 536 Gr. 60-40-18
Cast Steel	1.0619	GP240GH (GS-C 25)	A 216 Gr. WCB
Chrome Nickel Cast Steel	1.4308	G-X5 Cr Ni 19-10	A 351/743/744 Gr. CF8
Chrome Nickel Cast Steel (low carbon)	1.4309	G-X2 Cr Ni 19-11	A 351/743/744 Gr. CF3
Chrome Nickel Molybdenum Cast Steel	1.4408	G-X5 Cr Ni Mo 19-11-2	A 351/743/744 Gr. CF8M
Chrome Nickel Molybdenum Cast Steel (low carbon)	1.4409	G-X2 Cr Ni Mo 19-11-2	A 351/743/744 CF3M
Martenzitic Stainless Cast Steel	1.4008	G-X7 Cr Ni Mo 12-1	A 743 CA-15
Austenitic - Ferritic Cast Steel (duplex)	1.4517	G-X2 Cr Ni Mo Cu N 25-6-3-3	A 890 Gr. 1B (CD4MCuN)
Austenitic - Ferritic Cast Steel (super duplex)	1.4469	G-X2 Cr Ni Mo N 26-7-4	A 890 Gr. 5A (CE3MN)
Martenzitic Stainless Cast Steel	1.4317	G-X4 Cr Ni 13-4	A 351/743/744 (CA6NM)
Cast Bronze (tin alloy)	2.1050.01	G-Cu Sn 10	B 584 C 90700
Cast Bronze (nickel alloy)	2.0975.01	G-Cu Al 10 Ni	B 148 C 95800
Chrome Steel	1.4021	X20 Cr 13	A 276 Type 420
Chrome Nickel Steel	1.4301	X5 Cr Ni 18-10	A 276 Type 304
Chrome Nickel Steel (low carbon)	1.4306	X2 Cr Ni 19-11	A 276 Type 304L
Chrome Nickel Molybdenum Steel	1.4401	X5 Cr Ni Mo 17-12-2	A 276 Type 316
Chrome Nickel Molybdenum Steel (low carbon)	1.4404	X2 Cr Ni Mo 17-12-2	A 276 Type 316L
Duplex (austenitic-ferritic) Steel	1.4462	X2 Cr Ni Mo N 22-5-3	A 276 S 31803

Flange Dimensions

EN 1092 - 2

DNe/DNb	Suction & Discharge (PN 16)			
	Df	k	s	n
32	140	100	19	4
40	150	110	19	4
50	165	125	19	4
65	185	145	19	4
80	200	160	19	8
100	220	180	19	8
125	250	210	19	8
150	285	240	23	8
200	340	295	23	12

"n" number of holes

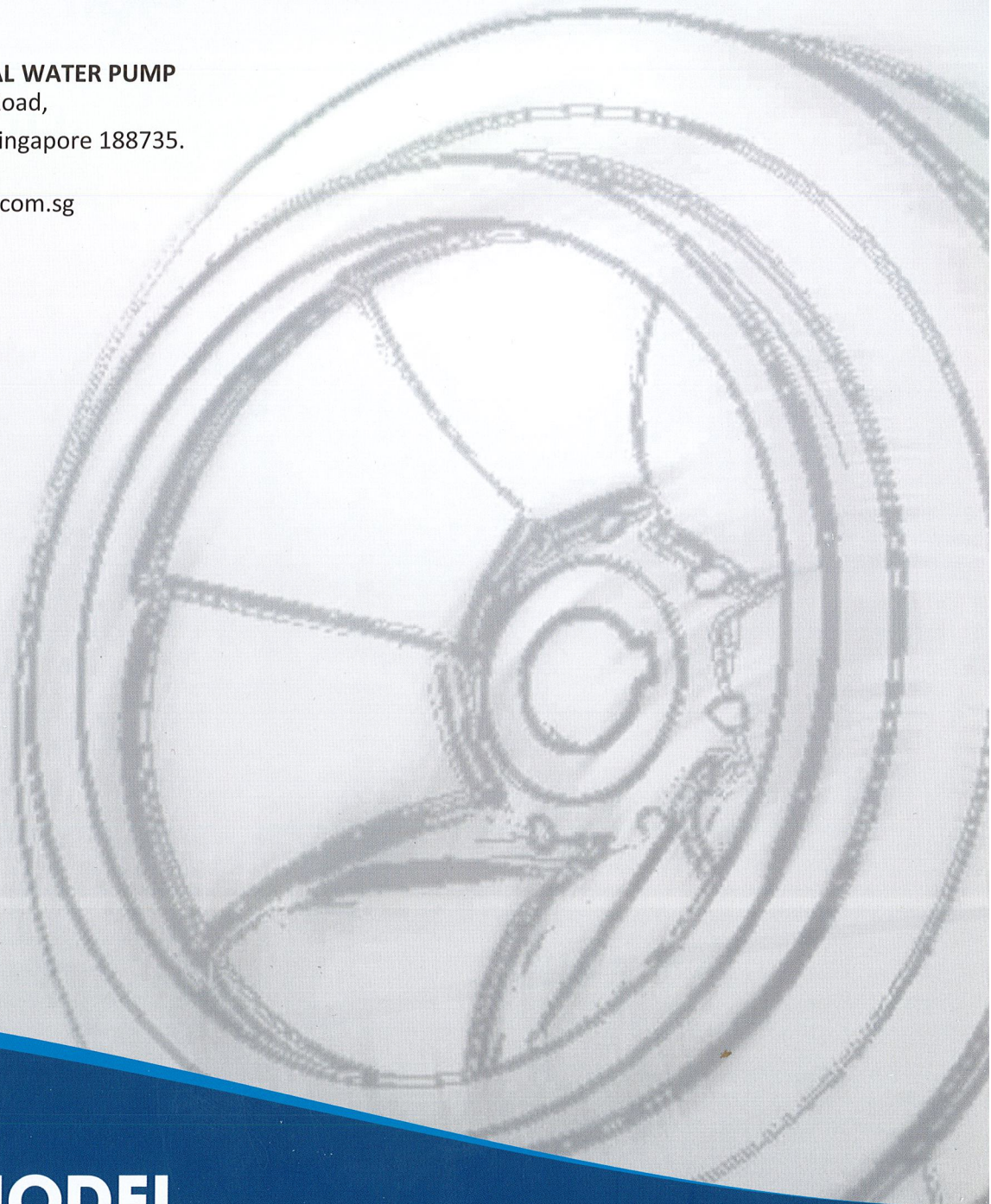


VERSAR®

The best solution for fluid control

VERSAR INDUSTRIAL WATER PUMP
#470 North Bridge Road,
#05-12 Bugis Cube, Singapore 188735.

Email: sales@versar.com.sg
www.versar.com.sg



VCM MODEL